

FOR FREE DISTRIBUTION—TAKE ONE
MUNICIPAL RECORD

Published Monthly by Authority of the City Commissioners

Vol. II

SALT LAKE CITY, UTAH, JANUARY, 1962

No. 1

337791



Pinecrest Inn—One Hour's Drive from Salt Lake City Over a Well Kept Mountain Road.

Photo by W. H. Hughes



SC 352 .0792258 #966
Salt Lake City (Utah)
Municipal record.
3 1120 02280 1384

Winter Sports in Our Nearby Canyons

By Dr. W. H. Hopkins.

One walks down the main street of Salt Lake City and realizes the advantages the city offers. But how many people here on casting a glance at the surrounding mountains realize that they too, offer possibilities to the Salt Laker, as well?

The Wasatch Mountain Club and the University hikers have discovered the beauties of the mountains and the advantages gained from spending one's time among them. The Winter activities of both these organizations have begun in earnest and the increasing popularity of them shows that the public is rapidly becoming convinced of the advantages to be gained in more outdoor activities spent among the mountains surrounding Salt Lake.



Photo by W. H. Hopkins

King of Outdoor Sports—Skating at Liberty Park.

These advantages are mental as well as physical. Both the above organizations spent some of their holidays at Pinecrest Inn. They drove out the Goblins and the gloom and filled the



Photo by W. H. Hopkins

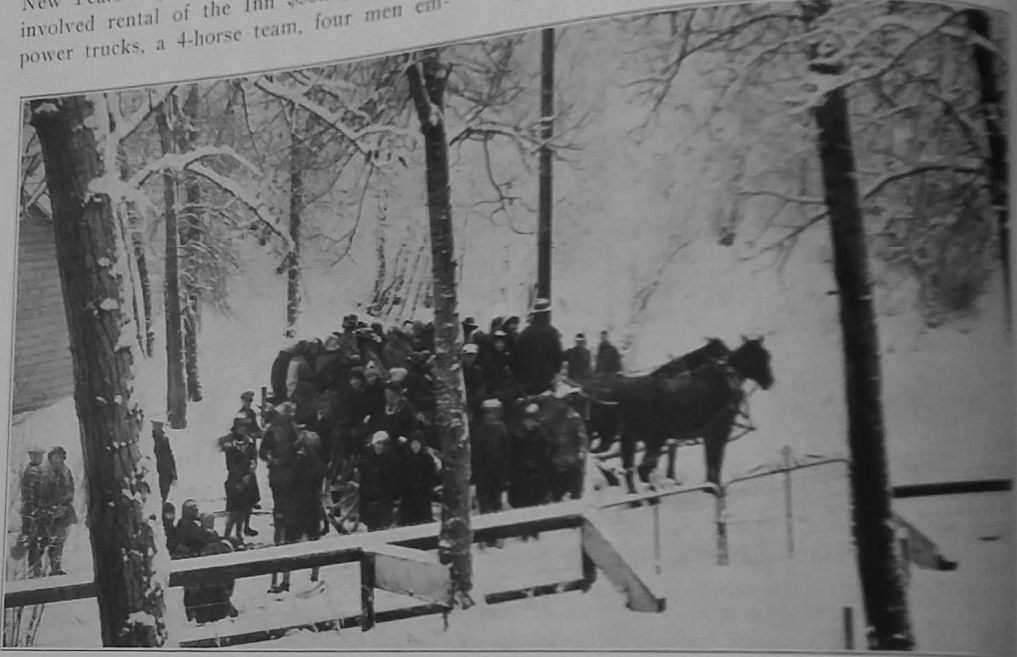
Members of the Wasatch Mountain Club Preparing for Skiing Party from Pinecrest Inn.

MUNICIPAL RECORD

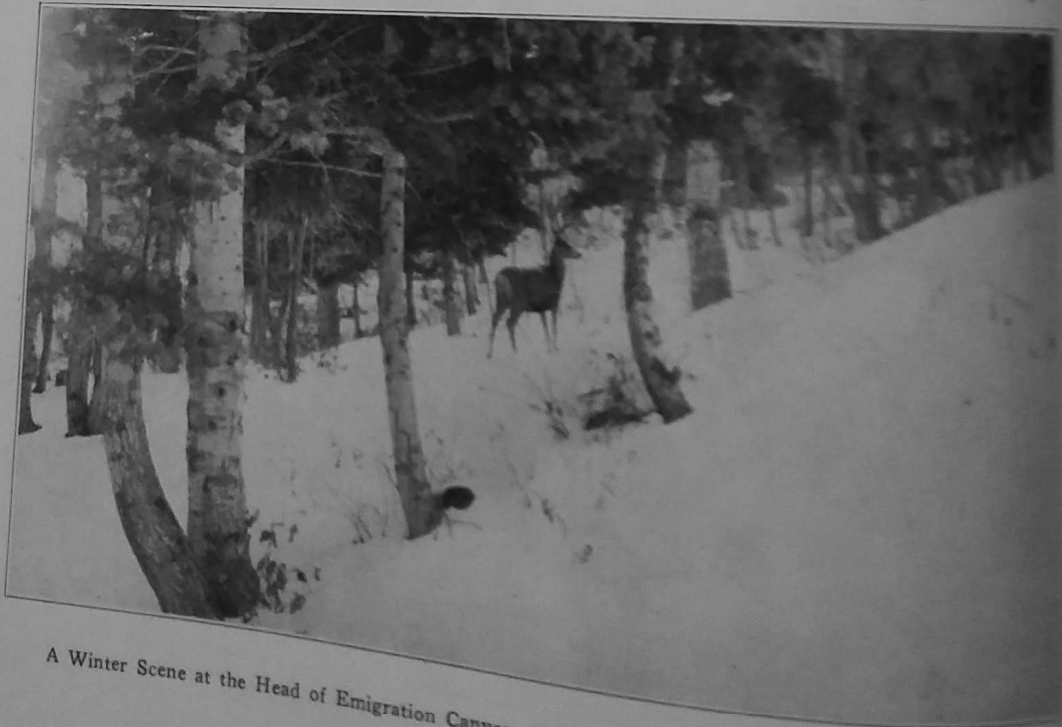
place with Elves and Fairies. The University right after Christmas and later the Wasatch Mountain Club including a hundred young men and women guests went for New Year's Eve, New Years Day and the following day. This involved rental of the Inn \$50.00, two high power trucks, a 4-horse team, four men em-

ployed, and over a hundred dollars worth of food, 25 pounds of candy, a gunny sack of peanuts, etc., etc.

Many more winter trips are being planned including a trip to Brighton and to other points nearer, as well as to Pinecrest, which is a delightful winter resort and easy of access.



The Home Coming of the Wasatch Mountain Club After a Week Spent at Pinecrest Inn Enjoying Winter Sports.



A Winter Scene at the Head of Emigration Canyon—One Hour's Drive from Salt Lake City.

Photo by W. B. ...

FOR FREE DISTRIBUTION—TAKE ONE

MUNICIPAL RECORD

Published Monthly by Authority of the City Commissioners

Vol. 11

SALT LAKE CITY, UTAH, MARCH, 1922

No. 3



A UNIQUE BUT EFFECTIVE METHOD OF REMOVING SNOW FROM PAVED STREETS.

Upper Main Street. Following up the snow plow with flushers. The water has a temperature of 110 degrees as it leaves the flushing tanks under high pressure. Note the clean pavement in rear of tank and the cloud of steam arising from the hot water.